

# Acoustic-Grilles | Acoustic-RipPanels Acoustic-Baffles

The acoustic systems for walls and ceilings



... when it matters!





# Acoustic-Grilles

Lighting options: Area lighting  
and LED stripes

## Design with a room effect for a pleasant sound experience

Acoustic-Grilles consist of vertical slats that can be individually produced with different surfaces, widths and lengths. The slats are attached to each other using either aluminium tubes or plywood strips. These prefabricated grille elements can be attached to corresponding T-profiles of standard grid ceilings by clips.

### Acoustics

Acoustic comfort has a major influence on how a room is experienced. Acoustic-Grilles offer an ideal acoustic solution with natural charm. The height and configuration of the slats can create the acoustic effectiveness and the desired atmosphere. Sound is passed through the open areas between the slats behind the Acoustic-Grilles by means of reflection. An acoustic fleece laminated on the back side provides an extended

absorption performance. In addition, it offers the possibility to conceal the ceiling construction or cabling underneath.

### Flexibility of design

Acoustic-Grilles offer architects and designers a freedom of design. Installed grilles appear to be seamless among each other. Only the joints between the grilles or between grilles and room boundaries must be at least 10 mm in the longitudinal direction. The installation can be done on ceilings as well as on walls. The variety of surfaces ranges from wood veneers to laminates, stained and laquered finishes to our LightBeton surfaces. Acoustic-Grilles can be combined with different lighting types and systems or other technical components.

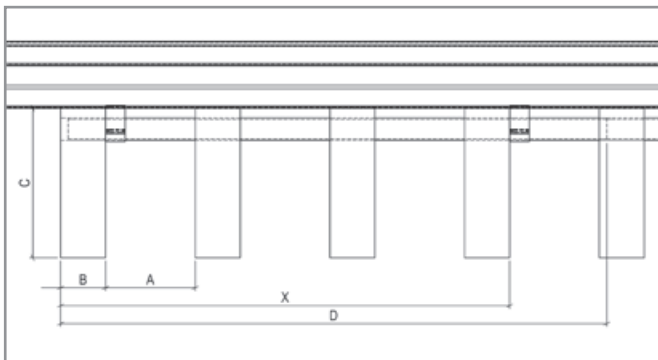
### System

Depending on the thickness and distance of the slats, the Acoustic-Grilles can be produced between 300 and 500 mm (11.8" and 19.7") in width. The length of the slats can be between 500 and 2700 mm (19.7" and 106.3"), depending on the pitch of the T-profiles (other length on demand). Connection of single slats, can be different in dimensions and surfaces within a grill if necessary. This can give the wall or ceiling surfaces their own special character.

### Construction

Acoustic-Grilles are defined and specified by the basic five characteristics:

- X = Number of slats
- A = Distance between slats
- B = Thickness of slats
- C = Height of slats
- D = Width of grille



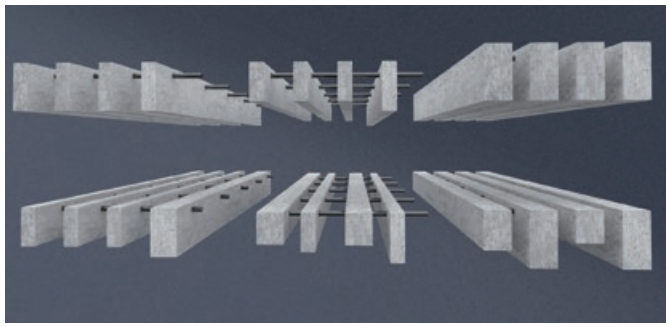
### Dimensions

Standard dimensions of the slats:

- Lengths: 500 - 2700 mm (19.7" - 106.3")
- Height [C]: 45 - 150 mm (1.8" - 5.9")
- Thickness [W]: 12 - 51 mm (0.5" - 2.0")
- Standard width grill [D]: 305 mm (12.0"), additional dimensions upon request.

### Weight

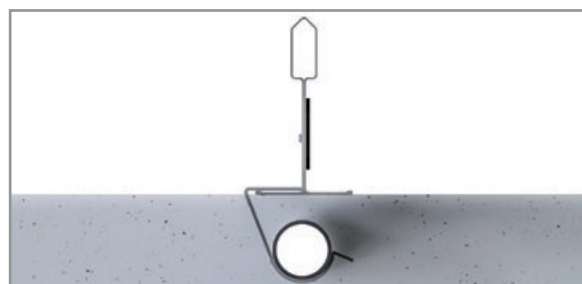
Acoustic-Grilles weigh between 9 and 30 kg/m<sup>2</sup> (1.85 and 6.15 lbs/sqft), depending of the dimensions and number of slats.



The installation of individual slats to an element is either with aluminium pipes or plywood strips. Depending on the grid size of the T-profiles, these are fixed at a distance of 300 or 305 mm (11.8" or 12.0"). For slat heights above 75 mm (3.0"), aluminium pipes are recommended to ensure a higher stiffening of the grilles. Aluminium tubes are available with a diameter of 12 or 15 mm (0.5" or 0.6") and are painted black as a standard (white or aluminium natural are optional).

### Fixing

Acoustic-Grilles can be easily attached to 24 mm (1.0") T-profiles for standard grid ceiling systems. These should be suspended according to the later expected surface load weight. The grilles can be fastened with J- or U-Clips. These allow an easy dismantling of individual areas even after installation if needed.





# Acoustic-RibPanels

## Acoustic comfort and discreet design

Acoustic-RibPanels are made of slats, which are individually manufactured with different surfaces and attached to acoustic PET Felt panels. These ready-to-use elements can be easily assembled.

### Acoustics

Enjoy the charm of natural surfaces in combination with the acoustic effectiveness of felt. Hitting sound is passed through the distances between the slats and absorbed by the felt behind them. Depending of the slat width and distance, the acoustic effectiveness can be further adjusted.

### Flexibility of design

Acoustic-RibPanels offer a great deal of design freedom with a low build-up thickness. The panels can be continuously mounted for a seamless look. Due to their linear appearance, visual directions or different room emotions can be created. In addition to the lightweight wall mounting, the relatively low weight also allows the application in ceiling areas. In addition to laminates and stained or laquered veneers, our StoneVeneer real slate surfaces and urban LightBeton surfaces are also available. You can also choose from a variety of different felt designs and decors to set individual accents.

### System

With a standard dimension of 2800 x 600 mm (110.2" x 23.6") even large areas can be designed fast and easy. The overlapping construction of the Acoustic-RibPanels makes it easy to attach additional surfaces. Optionally, larger individual dimensions are also available.

### Construction

Acoustic-RibPanels are made of wood-based slats, which are laminated with the chosen surfaces. These are mounted with a corresponding distance on a 12 mm (0.5") acoustic felt.

### Weight

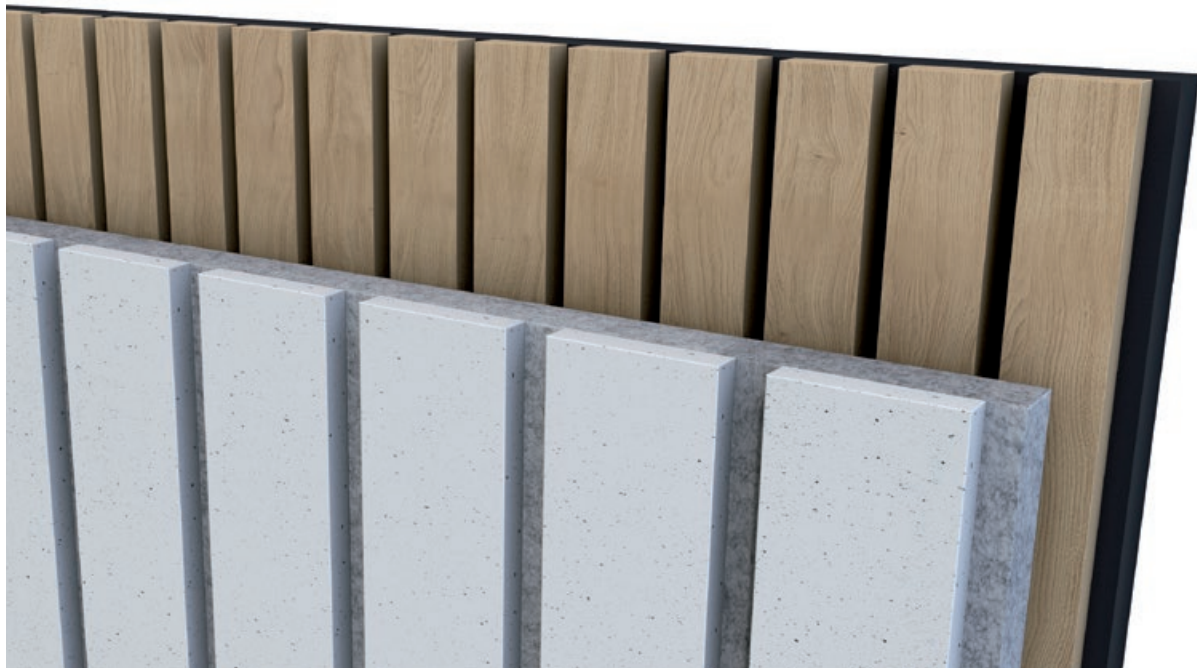
Acoustic RibPanels weigh between 10 and 12.5 kg/m<sup>2</sup> (2.05 and 2.55 lbs/sqft), depending on the dimensions and number of slats.

### Environmental friendliness

The acoustic felt panels are made of recycled materials and are also 100% recyclable.

### Assembly

The assembly can be performed by direct nailing, with staples, screwing or rear fixation with fasteners. Direct application with a strong mounting adhesive is also possible.



### Dimensions

#### Standard dimensions

Length: 2800 mm (110.2")  
Width: 600 mm (23.6"),  
wider upon request  
Thickness: approx. 24 mm (1.0"), depending  
of the selected surface design.

#### Standard grid

Width of ribs: 24 mm (1.0")  
Distance: 7 mm (0.3"), further grids available  
upon request.

Acoustic-RibPanels are available in different dimensions, surfaces and acoustic felt décors.



# Acoustic-Baffles

## Striking lines for perfect acoustics

Acoustic-Baffles are vertically suspended acoustic wood slats that can be produced in a variety of dimensions, surfaces and perforations. The type of assembly can be adapted as required by the project.

### Acoustics

High rooms with wide ceiling areas offer an ideal starting point for optimizing room acoustics with baffles. The sound that hits the baffles is mostly absorbed and the remaining sound energy is diffused and reflected by the vertical baffles. The acoustic effectiveness can be optimized depending on the width and spacing of the slats.

### Flexibility of design

Acoustic-Baffles offer designers the opportunity to set linear accents without completely covering the ceiling surfaces. In this way, concrete ceilings or technical installations can flow into the overall concept. In addition to laminates and wood stains, you can also choose from natural wood veneers or our urban real concrete LightBeton surfaces. If you don't see what you are looking for, we are happy to source any commercially available wood veneer for you.

### System

Acoustic-Baffles can be easily adapted to different systems and conditions. Due to the self-contained character of the Acoustic-Baffles, not only flat applications but also partial or accentuating applications are possible. The dimensions can be adjusted as required by the project.

### Attachment

The assembly and installation can be done with wire rope suspension systems on existing ceilings. This installation variant enables the Acoustic-Baffles to be positioned freely in the ceiling area as well as to adjust the suspension height. Alternatively grid ceiling profiles can be used for the assembly of uniform and large-area baffle installations.



### Construction

Acoustic-Baffles consist of an acoustically optimized carrier material that is covered with the specified perforated surfaces.

### Maximum specification dimensions

Length: 3000 mm (118.1")

Width: 600 mm (23.6")

Thickness: 50 mm (2.0")

Special custom requirements of sizes, shapes and configurations are available upon request.

### Weight

Acoustic-Baffles weigh between 10 and 20 kg/m<sup>2</sup> (2.05 and 4.10 lbs/sqft), depending on their dimensions.



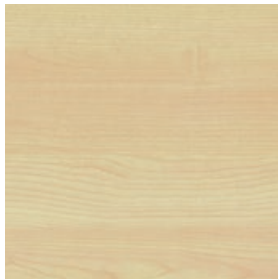
# Acoustic-Grilles | Acoustic-RibPanels

## Surfaces

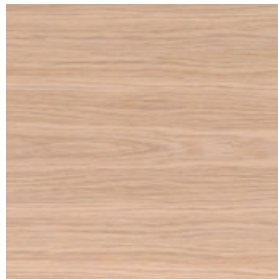
Acoustic-Grilles and Acoustic-RibPanels are available in various finishing options. Acoustic-Grilles offer a variety of surfaces - from wood veneers to laminates and paints to our authentic LightBeton® surfaces.

Our Acoustic-RibPanels also offer Richter original Stone-Veneer - real stone veneer made of natural slate for your wall design. There are no limits to the design and variety - RAL-colors are also available.

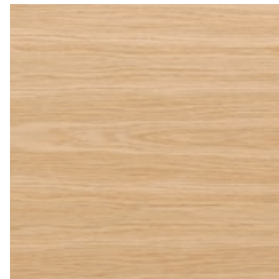
## Wood veneer



Maple



Oak



Cherry



Walnut

Additional veneer versions are available upon request.

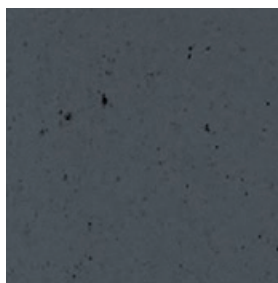


Acoustic-Grilles with wood veneer

## LightBeton®



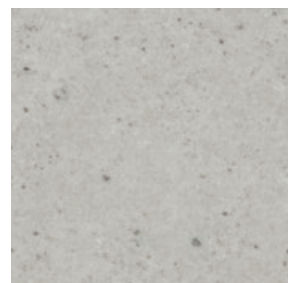
Classic grey



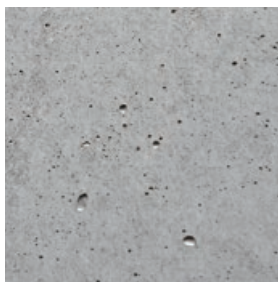
Classic anthrazit



Classic white



Authentic



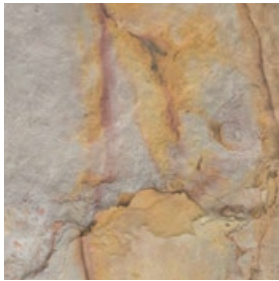
Retro



Acoustic-Grilles in LightBeton® version Classic grey



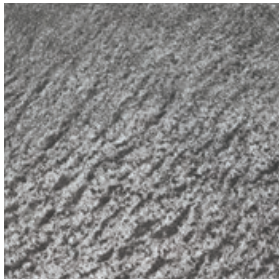
## StoneVeneer



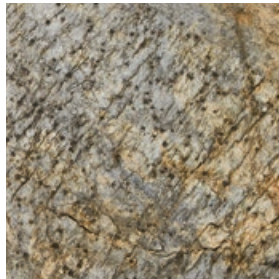
Autumn



Multi Color

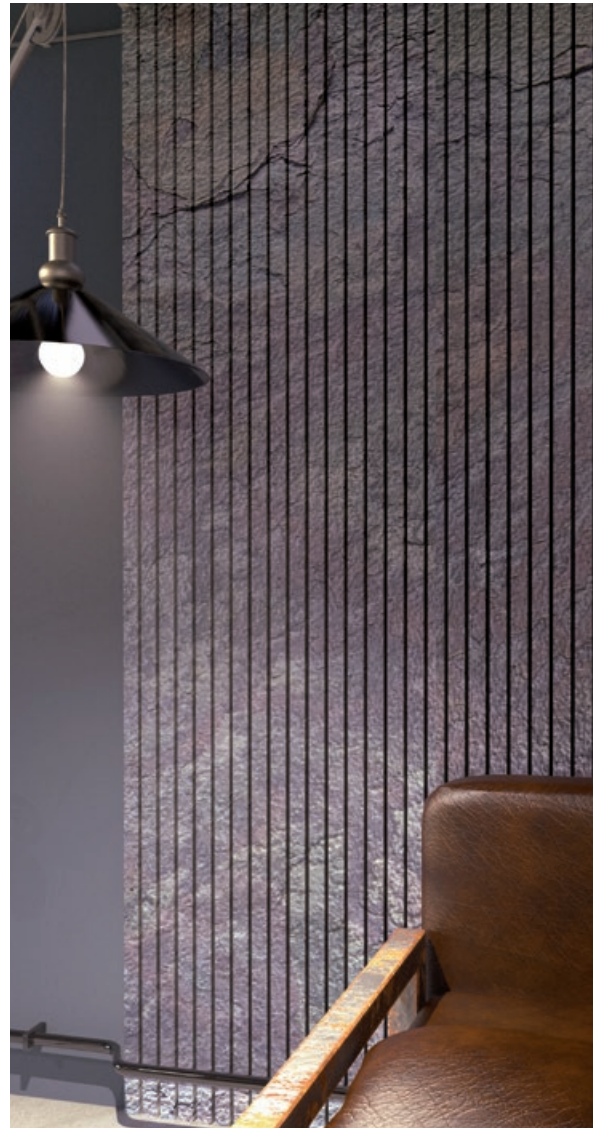


Black Star



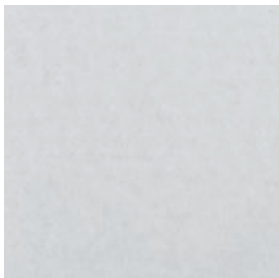
Gold Green

Other stone veneer finishes are available upon request.



Acoustic-RibPanels in StoneVeneer version Multi Color

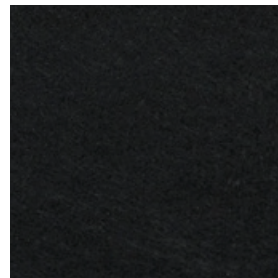
## Felt



White



Grey mottled



Black

Other felt décors are available upon request.

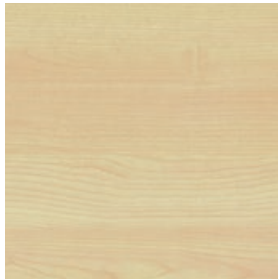
# Acoustic-Baffles

## Surfaces

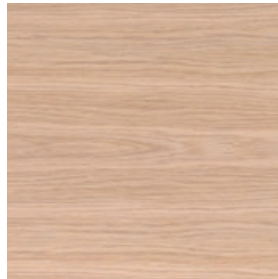
Acoustic-Baffles are available in various finishing options. Our baffles offer a variety of surfaces - from wood veneers to laminates and

paints to our authentic LightBeton® surfaces. There are no limits to the design and variety - RAL-colors are also available.

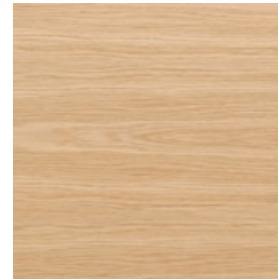
## Wood veneer



Maple



Oak



Cherry



Walnut

Additional veneer versions are available upon request.

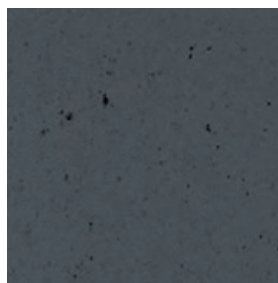


Acoustic-Baffles with wood veneer and micro-perforation

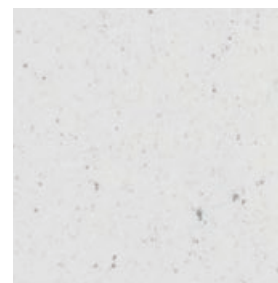
## LightBeton®



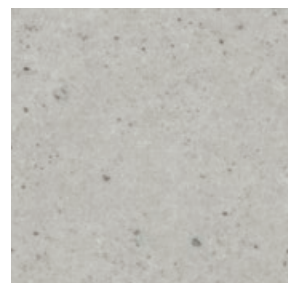
Classic grey



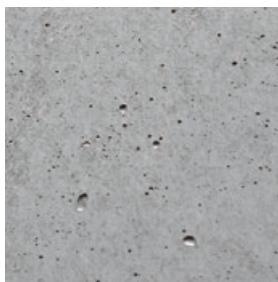
Classic anthrazit



Classic white



Authentic



Retro

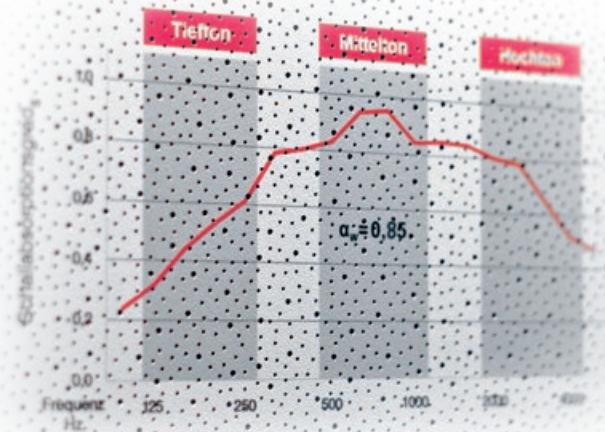


Acoustic-Baffles in LightBeton® version

# Micro-perforation - for perfect acoustics

The sound energy/noise enters through the micro-perforated surface and onto the under laying close-mesh honeycomb core. Here it is effectively absorbed and dissipated. This combination of elements is lightweight and dimensionally stable. Ideal for acoustically effective office furniture, partition walls and ceiling applications.

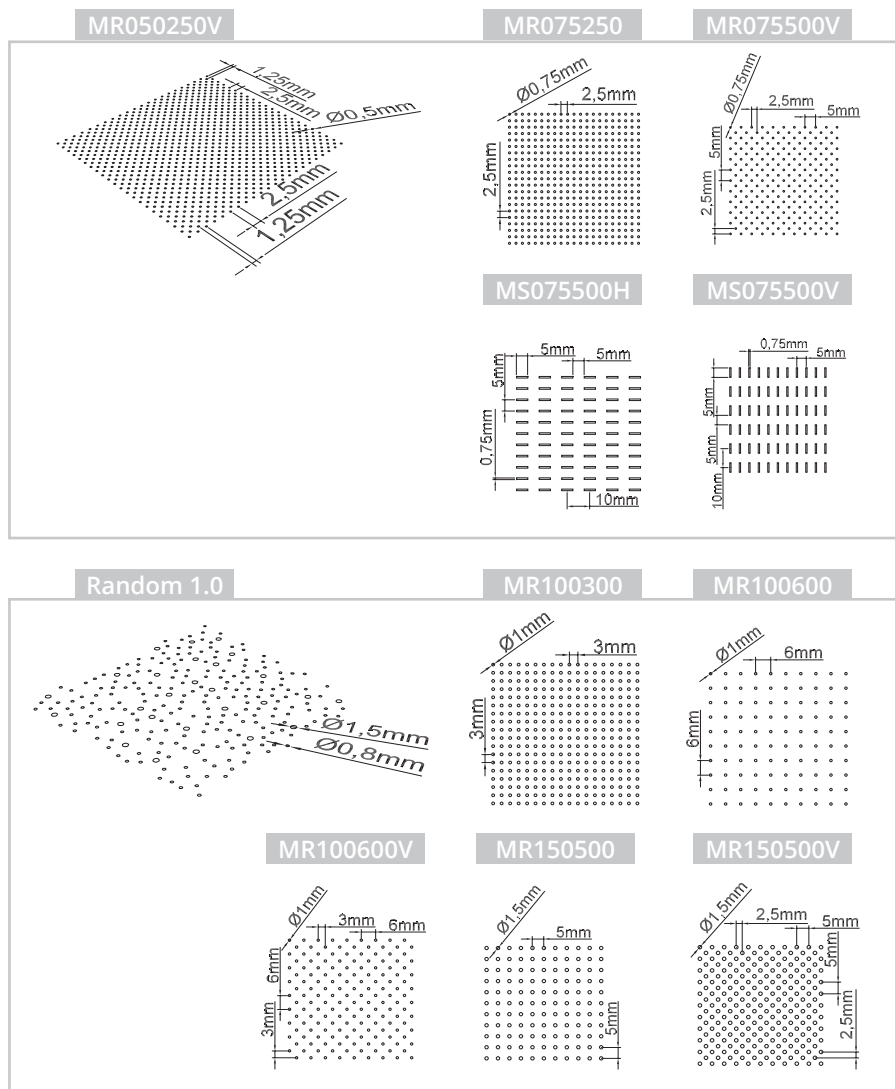
Over 320,000 perforations per square meter (29,728 perforations per square foot) creates environmentally-safe acoustics for offices to large halls.



## Micro-perforation

- Diameters of 0.5 to 1.5 mm (0.02 to 0.06")
- Various perforations patterns on front and back surfaces available

Un-perforated edge widths can vary independently on all four edges (depending on the perforation).

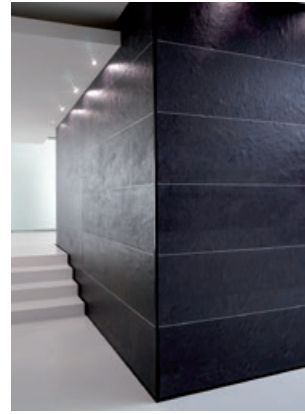




Acoustic-Lightboard®



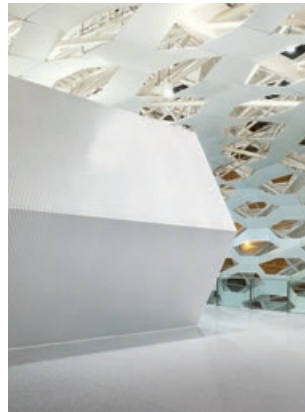
LightBeton®



StoneVeneer



Acoustic-Compact®



Acoustic-CompactPanel®



RiBoard®

## An impressive product portfolio

Our unique surface technology, creative design surfaces, innovative solutions in acoustics and fire protection have already won us numerous awards. But what is important to us as a team from Richter akustik & design is that you, whether architect, interior designer, property owner, shop and exhibition stand contractor or planner, benefit from our wealth of experience. To ensure that your projects always succeed.

Proudly represented in Canada by:

# ANC

a division of Wallworks Acoustic Architectural Products Inc.  
[www.acousticnoisecontrol.com](http://www.acousticnoisecontrol.com)  
[acousticnoisecontrol.info@gmail.com](mailto:acousticnoisecontrol.info@gmail.com)

Richter akustik & design GmbH & Co. KG  
St.-Annener-Straße 117 · 49326 Melle / St. Annen  
[www.richter-akustik-design.de](http://www.richter-akustik-design.de) | [info@richter-akustik-design.de](mailto:info@richter-akustik-design.de)

